



# Beyond Ready

M A Y 2 0 2 6  
4 - H N E W S L E T T E R



**KANSAS STATE**  
**UNIVERSITY**

Extension  
Phillips Rooks District

115 N Walnut Street  
Stockton, KS 67669  
785-425-6851

784 Sixth Street  
Phillipsburg, KS 67661  
785-543-6845

Team:  
Anna Muir, Director  
Rachael Brooke, Agent  
Jenny Reichard, Office Professional  
Cody Miller, Agent  
Cindy Walker, Agent  
Kristin Nash, Office Professional

Kansas State University is an equal opportunity employer and provider.

# STATE 4 - H NEWS

## YOUTH SUMMER CAMPS AT KANSAS STATE UNIVERSITY SALINA

**Wildcat Explorers Camp**—May 26 from 9:00 am to 4:00 pm for students entering the fourth through sixth grades. Work with an engineering expert to build and test airplane designs, learn how drones are used in everyday lives, and see how basic programming is used to complete a challenge with a robot. Register here—[Wildcat Explorers Camp | K-State Salina | Kansas State University](#)

**Wildcat Innovators Camp**—May 27-29 for students entering the seventh through eighth grades. Students will learn basic drone flying skills, and explore the world of virtual reality in 3D game simulation of each student's design. Register here—[Wildcat Innovators Camp | K-State Salina | Kansas State University](#)

**K-State Aviation Academy**—June 21-27 for students ages 15-17. Students will use flight simulators to learn how to safely fly an aircraft and have the opportunity to experience a cross-country flight to Stearman Field near Benton, KS. Register here—[K-State Aviation Academy | Kansas State University](#)

## 4-H DISCOVERY DAYS

June 3-5 at Kansas State University in Manhattan. Youth ages 13-18 before January 1, 2026 are invited to register. Come to learn new things, find a career/college path, meet new friends, experience K-State campus and develop skills. There's over 60 class sessions to choose from. Registration closes May 8—[Discovery Days | K-State | Kansas State University](#)

## FAMILY AND CONSUMER SCIENCES EXPERIENCE

New for 2026! The State 4-H Family and Consumer Sciences Judging Contest will take place on the K-State Campus June 4. The experience will include the Family and Consumer Sciences Judging Contest, lunch on campus, workshops, and a campus tour. The judging contest will include—consumer decision placing classes and reasons, skill-a-thon identification, and a group think presentation. The experience is open to all members ages 9-18 and youth can participate individually or a team of 3-4 youth in the same age group. Intermediates are ages 9-13 and seniors are ages 14-18. For more information—[Family and Consumer Sciences Judging | K-State | Kansas State University](#)

## STATE LIVESTOCK NOMINATIONS

All market animals and commercial breeding females must be nominated to be eligible for the Kansas State Fair Grand Drive and/or Kansas Junior Livestock Show. Small Livestock and Commercial Heifers due by June 15. The deadline to order DNA envelopes is 10 days prior to the deadline, which is June 5. More information can be found here—[Nominated Livestock | K-State | Kansas State University](#)

### 4-H HORSE JUDGING CAMP

June 22 at the Stanley Stout Center in Manhattan. Check in is at 7:30 am with camp being from 8:00 am-5:00 pm. There is a beginner and advanced session. Cost is \$85. Register here—[KSU Participant Registration Portal](#)

### VETMED ROCKS SUMMER CAMP

**High School Camp**—July 27 for students entering 9-12 grade and college.

**Middle School Camp**—July 28 for students entering 6-8 grades.

**Grade School Camp**—July 29 for students entering 3-5 grades.

Held at the KSU College of Veterinary Medicine. Scholarships are available. For more information—[VetMed Rocks Summer Camps | K-State | Kansas State University](#) Apply for a scholarship here—[Qualtrics Survey | Qualtrics Experience Management](#)

### ROCK SPRINGS RANCH

Summer camp is right around the corner. Be sure to check out the opportunities available at Rock Springs Ranch. They offer the traditional summer camp, a mini camp, and specialty camps like Ranch Camp, Shooting Sports Camp, Outdoor Wilderness Leadership Skills, and Family Camp. Financial assistance is available for 4-H members that want to attend camp. Find out more information about Rock Springs Ranch and get registered - [Rock Springs Ranch](#)

*“To Make the Best Better”*



# STATE 4 - H NEWS

## 4-H Families

### Subject: Rock Springs Ranch Update

Dear Kansas 4-H Families,

Across Kansas, 4-H is made possible by young people, families, volunteers, and educators who invest time, energy, and care into each experience.

As part of ongoing strategic planning, the Kansas 4-H Foundation Board of Trustees is taking a thoughtful look at how we can best support 4-H youth across all 105 counties, not just today, but for the future. This includes evaluating the long-term financial sustainability of Rock Springs Ranch.

The cost of owning, operating, and maintaining the aging infrastructure at Rok Springs Ranch has grown significantly. At the same time, we recognize that 4-H experiences today require more philanthropic support to reach youth in communities across the state in many different ways.

Because of this, the Board has authorized the Foundation to explore potential options for transitioning ownership and operation of Rock Springs Ranch. This is an exploratory phase, and no decisions have been made.

We know what matters most to you is your child's experience, so we want to be clear:

- All 2026 4-H summer camp plans are moving forward as scheduled
- Current reservations and events at Rock Springs Ranch remain unchanged
- Registration for summer camp is open and ongoing

As we explore potential paths forward, our priorities are to:

- Strengthen long-term support for 4-H youth across Kansas
- Reduce financial pressures that limit broader investment in 4-H programming
- Maintain opportunities for young people to experience Rock Springs Ranch

We understand that Rock Springs Ranch holds a special place for many families. For generations, it has been a place where friendships are formed, confidence is built, and lifelong memories are made. That legacy matters, and it is being carefully considered in every step of this process.

Just as importantly, our mission as the philanthropic partner for Kansas 4-H remains focused on ensuring every young person has access to meaningful, high-quality 4-H experiences across the state.

We are excited to welcome campers this summer to unplug from devices and plug into nature. We are committed to keeping you informed as we learn more. To learn more, visit [www.kansas4hfoundation.org/rsr-update](http://www.kansas4hfoundation.org/rsr-update).

Thank you for the trust you place in 4-H and for the role you play in helping your child grow, lead, and thrive.

With gratitude,

Mindy R. Weixelman

President/CEO, Kansas 4-H Foundation

# LOCAL 4 - H NEWS

## UPCOMING MEETINGS

Phillips County 4-H Council — May (date to be determined) Committees meet  
Rooks County 4-H Junior Leaders—May 11 at 7:00 pm at the Rooks County Fairgrounds,  
4-H Building  
Rooks County 4-H Council—May 11 at 7:30 pm at the Rooks County Fairgrounds, 4-H Building

## YOUTH FOR THE QUALITY CARE OF ANIMALS (YQCA)

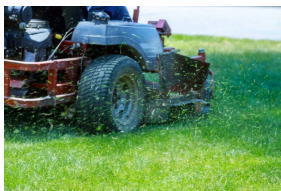
Required for youth planning to sell livestock in the Rooks County Free Fair 4-H/FFA Livestock Sale, livestock exhibitors at the Kansas State Fair and Kansas Junior Livestock Show. Training is available online at <https://yqcaprogram.org> Coupons are available upon request from the Phillips-Rooks Extension District at 785-425-6851.

## HORSE ID CERTIFICATE DEADLINE

If you are planning to show your horse at the Phillips County Fair or Rooks County Free Fair you must complete a horse identification certificate by May 1. The certificate should be turned into the Phillips-Rooks Extension District Office and/or uploaded into your 4-H Online account. Please use the form updated July 2024 for all horses you plan to show [horse-identification-certificate P1039.pdf](#)

## ADD/DROP 4-H PROJECT DEADLINE

May 1—Deadline to make project changes that you plan to take to the Phillips County Fair or Rooks County Free Fair. Changes should be made here—[Sign In](#)



## PHILLIPS COUNTY FAIRGROUNDS CLEAN UP

May (first half) - Phillipsburg FFA, May (second half) - Sunnyside 4-H Club,  
June (first half) - Agra Trailblazers 4-H Club, June (second half) - Lone Prairie  
4-H Club, July (first half) - Iowa Union 4-H Club, Clean Up and Set Up for  
Fair—July 15 at 6:00 pm all 4-H Clubs and FFA, August—Deer Creek 4-H  
Club, and September—Logan FFA

## PHILLIPS COUNTY 4-H DOG PRACTICES

To be held May 19 at 6:00 pm at the Phillips County Fair Building. Other dates will be set up at that practice.

# LOCAL 4 - H NEWS

## PHILLIPS COUNTY 4-H STYLE REVUE

July 14 at the Huck Boyd Community Center in Phillipsburg. All forms and pictures should be submitted online by July 3. Agra Trailblazers 4-H Club is responsible for stage management and Deer Creek 4-H Club for decorations.

## PHILLIPS COUNTY FAIR SET UP

July 15 at 6:00 pm at the Phillips County Fairgrounds. All clubs should plan to participate.

## PHILLIPS COUNTY FAIR HORSE SHOW

July 18 at 8:00 am at the Phillipsburg Rodeo Grounds.

## PHILLIPS COUNTY FAIR "IS OUT OF THIS WORLD"

July 24-28 at the Phillips County Fairgrounds. Online fair entries will be available June 1. Fair entries are due by July 15.

## PHILLIPS COUNTY FAIR PREMIUM REQUIREMENTS

Required participation to receive a Phillips County Fair premium for 2026:

-4-H members must attend three 4-H Club meetings from roll call to adjournment

-Work their shifts in the fair food concession stand

Members must also meet **one** of the following requirements:

-Attend 4-H Sunday

-Participate in the county sponsored fundraiser (Dip Dip Hooray, expectation to sell 4 packets)

-Participate in County 4-H Club Day

-Participate in a 4-H leadership activity, such as serving as a teen leader at Day Camp

## PHILLIPS COUNTY FAIR CLUB CLEAN UP RESPONSIBILITIES

Areas are to be cleaned by 10:00 am every morning of the Phillips County Fair.

Agra Trailblazers 4-H Club—Swine/Sheep Barn and Surrounding Area

Deer Creek 4-H Club—West Beef Barn and Surrounding Area

Iowa Union 4-H Club—Show Arena and Under Bleachers

Lone Prairie 4-H Club—Inside and Outside Building and Patio Area of the Fair Building

Sunnyside 4-H Club—East Livestock and Rabbit Building and Parking Lot and Patio Area

Logan and Phillipsburg FFA—Horse Barn and Surrounding Area

Overnight Campers—Camping Sites

# LOCAL 4 - H NEWS

## ROOKS COUNTY 4-H DOG PRACTICES

To be held at 1:00 pm at the Rooks County Fairgrounds, 4-H Building on the following dates—  
May 17, and June 21

Please bring proof of dog vaccination records, water, and treats for your dogs. Additional summer practices may be scheduled as needed.

Members and their dogs must attend 2 practices to be eligible to show at the Rooks County Free Fair. The dog project leader is Mari Jo Stout. If you have any questions, please contact her at 785-623-8006.

## ROOKS COUNTY FREE FAIR

August 4-8 at the Rooks County Fairgrounds. Fair entry forms are due by July 24.



Zoom meetings that will cover the state livestock nomination process. The session will open with a presentation of general information regarding nominations and requirements. Then transition to logging into the ShoWorks system and doing some live examples of creating exhibitor accounts, submitting animal nomination entries, uploading documents, purchasing DNA envelopes, and printing the correct receipt to mail with your signed DNA envelopes. There will be time for questions as well. Attendees need to register by noon on Monday prior to the zoom meeting.

Register here for the Small Livestock Nomination Zoom—[2026 Small Livestock State Livestock Nomination Zoom Session](#)



SPRING 2026

# RABBIT LEARNING CLINIC

4-HERS  
WELCOME!

**Join us for a rabbit project workshop  
led by 2025 Team Kansas members  
and current ARBA royalty!**

**Presentations will include:**

- Youth Contests - Cooper Nemechek
- Showmanship - Jacob Landzettel
- What to look for when buying a rabbit - Jonathan Wright
- How to palpate does - Alycia Granado
- What is a malocclusion - Amaree Wiebers
- Educational exhibits - Alena Wiebers

Have up to 2 of your rabbits checked for  
DQs & faults by a licenced ARBA registrar

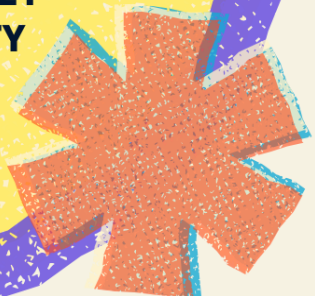
**LUNCH WILL BE PIZZA! JOIN US FOR \$5 PER FAMILY**

RSVP to [stevenwjedi@gmail.com](mailto:stevenwjedi@gmail.com)

**MAY 9 2026  
9:00-3:00**

**GREEN VALLEY  
COMMUNITY  
CENTER**

3770 Green Valley Rd,  
Manhattan, KS



# BEGINNER RABBIT SHOWMANSHIP WEBINAR MONDAY, MAY 11 @ 7PM

Join Ness County 4-H member, Daphne R. via zoom as she teaches about the basics of rabbit showmanship and how to start preparing for your county fair contest. This clinic is for beginner showmen.



**DAPHNE RIDER**  
**3 TIME KS STATE FAIR**  
**SHOWMANSHIP WINNER**



**SAVE THE DATE: JUNE 8<sup>TH</sup> 7PM-  
INTERMEDIATE CLINIC**

## **RABBIT SHOWMANSHIP REGISTRATION**

Register here — [Meeting Registration - Zoom](#)

4-H Rabbit member, Daphne, shares the basics of rabbit showmanship. Daphne is a 3-time Kansas State Fair Champion in Rabbit Showmanship and is active in rabbit shows at the 4-H and ARBA level.

## **4-H PLEDGE**

I pledge my **HEAD** to clearer thinking,  
my **HEART** to greater loyalty,  
my **HANDS** to larger service,  
and my **HEALTH** to better living,  
for my club, my community,  
my country, and my world.



# Tractor Safety Operator's Course

Students must attend all day on May 27th for the training and final test.

Wednesday, May 27<sup>th</sup>, 2026

Gray County Fairgrounds  
17002 W. Highway 50, Cimarron



**K-STATE**  
Research and Extension



## **PURPOSE OF COURSE & TEST:**

To provide teenagers with a fuller appreciation and awareness of needed safety practices around tractors and farm machinery. As well as provide 14 & 15 year old youth an opportunity to receive a tractor operator's permit, required by the Child Labor Regulations in regard to agricultural hazardous occupations before they can be employed to operate a tractor.

## **WHO MAY PARTICIPATE:**

Any teenage youth, regardless of age. Those completing the course and test will receive an operator's certificate upon completion of when he/she turns 14. Those who are 16 or older do not need an operator's certificate, but are welcomed and encouraged to attend.

## **SCHEDULE:**

Tractor and other important farm safety skills will be given from 8:00 a.m. to 5:00 p.m. on Wednesday, May 27<sup>th</sup> Registration starts at 8:00 a.m. at the Gray County Fairgrounds.

## **COST:**

\$20.00 (made payable to the Ford County Ag Activity Fund) for noon meal and handouts.

## **MEAL:**

The noon meal, included in the registration fee, is hamburgers hot off the grill. Students are encouraged to eat the meal provided. Please contact the Gray County Extension Office, 620-855-3821 with any participant's dietary restrictions.

## **ENROLLMENT:**

All participants will need to complete a registration form and a 4-H Participation form in order to participate.

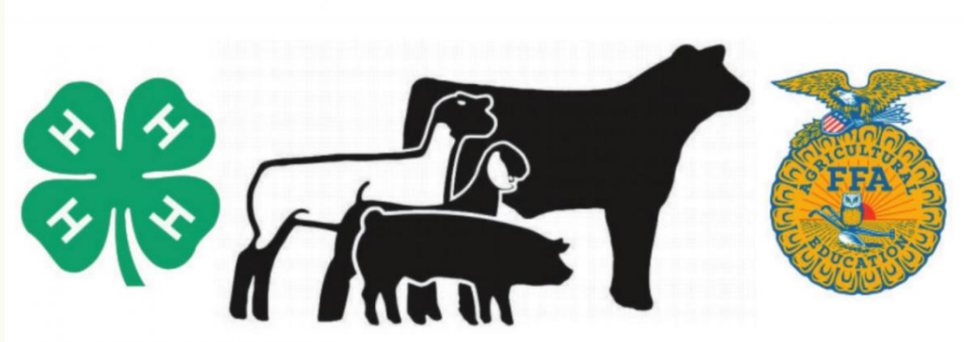
**PRE-REGISTRATION FOR TRACTOR COURSE IS REQUIRED BY WEDNESDAY, MAY 20<sup>th</sup>, TO YOUR LOCAL EXTENSION OFFICE.**

Sponsored By:

Clark, Comanche, Ford, Gray,  
Hodgeman, Meade, Pawnee  
County Extension Councils,  
Walnut Creek Extension District,  
& 21<sup>st</sup> Central Extension  
District— Edwards County

K-State Research and Extension is committed to making services, activities and programs accessible to all participants. If you have special requirements due to a physical, vision or hearing disability, contact Kurt Werth at 620-855-3821 or [kwert@ksu.edu](mailto:kwert@ksu.edu). Requests received will be honored when it is feasible to do so.

# LARGE ANIMAL SHOWMANSHIP CLINIC



## Join the Rooks County 4-H Junior Leaders

May 28 at 5:30 pm

Rooks County Fairgrounds, Sutor-Blauer Arena  
Stockton, KS

### LEARN HOW TO SHOW:

- ✓ Beef
- ✓ Dairy Goat
- ✓ Horse
- ✓ Meat Goat
- ✓ Sheep
- ✓ Swine

**RSVP BY**

**MAY 25**

**Call the Phillips-Rooks  
Extension District  
785-425-6851**

K-State Research and Extension is committed to providing equal opportunity for participation in all programs, services and activities. Program information may be available in languages other than English. Reasonable accommodations for persons with disabilities, including alternative means for communication (e.g., Braille, large print, audio tape, and American Sign Language) may be requested by contacting the event contact, Rachael Brooke, two weeks prior to the start of the event at 785-425-6851 or rbrooke@ksu.edu. Requests received after this date will be honored when it is feasible to do so. Language access services, such as interpretation or translation of vital information will be provided free of charge to limited English proficient individuals upon request.

# 2026 KANSAS 4-H GEOLOGY FIELD TRIP REGISTRATION OPEN



When: June 12-14<sup>th</sup> 2026

Where: Southeast with  
Headquarters at Parsons Middle  
School



Registration Deadline: May 15th



**K-STATE**  
Research and Extension



Kansas State University Agricultural Experiment Station and Cooperative Extension Service.  
K-State Research and Extension is an equal opportunity provider and employer.

## GEOLOGY FIELD TRIP REGISTRATION

Register here by May 15—[Event Summary Info - 2026 Kansas 4-H Geology Field Trip](#)

**2026 4-H Geology State Field Trip – June 12 - 14 Southeast Kansas**  
**Registration Deadline May 15<sup>th</sup>, 2026 – No late registrations**

The headquarters for the 2026 4-H State Geology Field Trip is at the Parsons Middle School, located at 2719 Main Street, Parsons, Kansas.

This trip will focus on the Tri State Mining District, the Southeast Kansas Coal Mining Area and the Silver City Dome Mining Area. We will be collecting specimens from the Pennsylvanian and Mississippian age rocks of the Cherokee Lowlands and Osage Cuestas.

Registration is \$10 per person. **Every family member who attends trip must register including ages 0-150.** Field Trip t-shirts can be purchased for \$20. Exhibit boxes made of various wood and prices are also available, Cedar is \$55 and all other woods offered are \$65. T-shirts and exhibit boxes need to be purchased through the online registration system. We will have a variety of educational publications for sale through the Kansas Geological Survey as well as glass vial and plastic mag box specimen containers. Publications and specimen containers will be available for purchase at the field trip headquarters. Here is the registration link: <https://cvent.me/3owkLQ>

Big Brutus will be our lunch stop on Saturday the 13<sup>th</sup>. Participants may choose to enter the museum and Big Brutus grounds here with a group discount charge of \$4.00 per person, pay at the door for those who choose to view Big Brutus up close. There will be no charge for picnicing in the Big Brutus Parking Area. Participants will also be able to visit the Joplin Tri-State Mineral Museum near our last stop of the day on Saturday, free of charge, by showing your group badge. Museum will be open until 5:00 pm, on Saturday.

**Friday June 12:** Registration and judging contest will begin at 4:00 pm at the trip headquarters. No supper will be provided. The formal meeting will start at 6:00 pm with general information and orientation. Following the meeting, we plan to have a guest speaker. We will break into workshops afterwards, including Fossil ID, Mineral ID, Lapidary, and Geology 101.

**Saturday June 13:** Registration will resume at 7:00 am. The group meeting will be at 7:30 am at headquarters. Make sure to have a full tank of fuel in your vehicle. We plan to depart at 8:00 am for our first stop. Everyone should have a picnic lunch and drinks for the day. Saturday evening events, held at the headquarters (Parsons Middle School) include quiz bowl, judging contest, and specimen identification. Supper is on your own.

**Sunday June 14:** We will begin cleaning headquarters at 6:45 am. Headquarters will be put in order at 7:30 am. The group meeting will be at 8:00 am and we will depart at 8:30 am. Everyone should have a picnic lunch and drinks for the day, and a full tank of fuel.

**4-H Leaders and Junior Leaders** interested in helping on the field trip, please contact one of the leaders below. We will have a different colored t-shirt for the trip leaders and junior leaders again this year. You will need to purchase your shirts.

Indoor camping is offered at Parsons Middle School, and outdoor camping is also available nearby.

For additional information:

Kim Viets  
mkviets@ckt.net

Sue Williams  
[swift\\_surfer@yahoo.com](mailto:swift_surfer@yahoo.com)

Cell -620-724-0288

620-288-0571

# 4 - H C A L E N D E R O F E V E N T S

## May

- 1 Livestock Tagging Deadline
- 1 Horse Identification Certificates Due
- 1 Last Day to Add/Drop Projects
- 1 Market Beef Nominations Due for Kansas State Fair and Kansas Junior Livestock Show
- 11 Rooks County 4-H Junior Leaders
- 11 Rooks County 4-H Council
- 17 Dog Practice - Stockton
- 19 Dog Practice - Phillipsburg
- 20 Phillips County Day Camp
- 28 Large Animal Showmanship Clinic

## June

- 3-5 Discovery Days
- 4 Family and Consumer Sciences Experience
- 5 Last Day to Order Small Livestock DNA Envelopes for Kansas State Fair and Kansas Junior Livestock Show Nominations
- 10-13 K-State Animal Science Leadership Academy
- 12-14 Geology Field Trip
- 13-23 Citizenship Washington Focus
- 15 Commercial Heifer, Swine, Sheep, & Meat Goat Nominations Due for Kansas State Fair and Kansas Junior Livestock Show
- 21 Dog Practice - Stockton
- 22 Horse Judging Camp

## July

- 3 Phillips County Fair Style Revue Entries Due
- 10 Dr. Bob Hines Kansas Swine Classic
- 14 Phillips County 4-H Style Revue
- 15 Phillips County Fair Entries Due
- 15 Phillips County Fair Set Up
- 18 Phillips County Fair Horse Show
- 18 Rooks County Free Fair Dog Agility Show
- 24 Rooks County Free Fair Entries Due
- 27 VetMed Rocks Summer High School Camp
- 28 VetMed Rocks Summer Middle School Camp
- 29 VetMed Rocks Summer Grade School Camp

Visit our website:

<https://www.phillipsooks.k-state.edu/4-h/>

**KANSAS STATE**  
**UNIVERSITY**

Extension  
Phillips Rooks District

K-State Research and Extension is committed to providing equal opportunity for participation in all programs, services, and activities. Discrimination based on race, color, ethnicity, national origin, sex, sexual orientation, gender identity, religion, age, ancestry, disability, genetic information, military status, or veteran status is prohibited. Program participants may request information in languages other than English. Reasonable accommodations for persons with disabilities, including alternative means for communication (e.g., Braille, large print, audio tape, and American Sign Language) may also be requested. Language access services, such as interpretation and translation of vital information will be provided free of charge to limited English proficient individuals upon request.