



Beyond Ready

J A N U A R Y 2 0 2 6
4 - H N E W S L E T T E R



KANSAS STATE
U N I V E R S I T Y

Extension
Phillips Rooks District

115 N Walnut Street
Stockton, KS 67669
785-425-6851

784 Sixth Street
Phillipsburg, KS 67661
785-543-6845

Team:
Anna Muir, Director
Rachael Brooke, Agent
Jenny Reichard, Office Professional
Cody Miller, Agent
Cindy Walker, Agent
Kristin Nash, Office Professional

Kansas State University is an equal opportunity employer and provider.

STATE 4-H NEWS

STATE 4-H HORSE JUDGING CONTEST

January 23 at EquiFest of Kansas in Topeka. Two contests are available- an open contest and a 4-H contest. Kansas 4-H members age 9-18 are invited to participate in the 4-H contest, and may also participate in the open contest. Youth of any age are eligible to participate in the open contest hosted by Kansas Quarter Horse Association. Cost to enter the 4-H contest is \$25. Registration for the open contest is \$15. Coaches should register teams and individuals here—[Horse Judging Entry Form | EquiFest of Kansas](#). Early-bird registration closes January 2; late registration is available until January 9. Registration will NOT be taken the day of the contest. Please be sure to read all rules prior to entry- [Horse Judging](#)



Citizenship In Action

REGISTRATION IS NOW OPEN!

- WHEN - February 15-16, 2026
- COST - \$225
- WHO - Youth ages 13-18
- WHERE - Hotel Topeka City Center, 1717 SW Topeka Blvd, Topeka, KS 66612
- SPACE IS LIMITED SO GET OUT AND REGISTER!

CITIZENSHIP IN ACTION

February 15-16 at Hotel Topeka City Center. Youth 13-18 years old **that want** to learn how the state legislative process works and how their voice and participation in decision-making can make a difference in their local communities should plan to attend. The legislative visit will not only familiarize youth with the capitol building, but will also show them how they can affect the legislative process. Register here by January 26—[Personal Information - Citizenship In Action \(CIA\) 2026](#)

HORSE PANORAMA

February 21-22 at Rock Springs Ranch. This event gives youth the opportunity to demonstrate their knowledge of equine science, structure, movement, and more in a competitive yet supportive environment that emphasizes learning, fairness, and fun. This event also helps determine which youth will represent Kansas 4-H at the national Horse Bowl, Hippology, Horse Public Speaking and Horse Demonstration contests. Register here by January 30—[Horse Panorama](#)



4-H HORSE PANORAMA

February 21-22, 2026
Rock Springs



REGISTER BY
JANUARY 30, 2026

4-H DAY WITH K-STATE WOMEN'S BASKETBALL TEAM

March 1 at 1:00 pm against Iowa State. More details to come.

STATE 4 - H NEWS

CITIZENSHIP WASHINGTON FOCUS TRIP

JUNE 13-23, 2026. Road trip across the USA stopping to see Philadelphia, Gettysburg, the Liberty Bell and more! Visit Capitol Hill, government departments, historic sites, and memorials. Get a close-up view of the political process through visits to Capitol Hill. Meet with the Kansas Congressional and Senate delegations to discuss legislative issues. Participate in workshops and assembly groups to learn life skills and discuss possible solutions to domestic and international problems. Interact with 4-H members from other states, learning and sharing about 4-H and other interests and issues. This trip has filled up quickly in the last few years, make sure that you do not delay in signing up to attend! Register here by February 5—[Personal Information - 2026 Citizenship Washington Focus - Combine trip with Kansas - Oklahoma - Missouri](#)

LOCAL 4 - H NEWS

UPCOMING MEETINGS

Phillips County 4-H Council — Committees meet January 26 at 7:00 pm at the Phillips County Annex, 4-H Council will meet at 7:30 pm
Rooks County 4-H Junior Leaders—January 12 at 7:00 pm at the Rooks County Fairgrounds, 4-H Building
Rooks County 4-H Council—January 12 at 7:30 pm at the Rooks County Fairgrounds, 4-H Building



COAT EXCHANGE

Coats and winter weather apparel are needed.
Phillips County—Phillips County Annex Meeting Room
Rooks County—Rooks County Courthouse First Floor North Hallway



YOUTH FOR THE QUALITY CARE OF ANIMALS (YQCA)

Required for youth planning to sell livestock in the Rooks County Free Fair 4-H/FFA Livestock Sale, livestock exhibitors at the Kansas State Fair and Kansas Junior Livestock Show. Trainings will be available on March 9 at 6:00 p.m. at the Rooks County Fairgrounds, 4-H Building, March 30 at 5:30 pm. at the Phillips County Annex Meeting Room, and April 13 at 5:30 pm at the Rooks County Fairgrounds, 4-H Building. All livestock must be tagged and turned into the Phillips-Rooks Extension District by May 1 to be eligible for the Phillips County Fair and Rooks County Free Fair.

LOCAL 4 - H NEWS

PHILLIPS COUNTY 4-H EVENT SCHOLARSHIPS

The Phillips County 4-H Council will provide scholarships to members attending events. \$200 for state events and \$300 for national events. The scholarship application can be found here: [Phillips County 4-H](#)

PHILLIPS COUNTY 4-H EVENT SCHOLARSHIP JAKE & LUCILLE JONES

Through the Phillips County Community Foundation a 4-H event scholarship is available to 4-Hers that are wanting to attend Rock Springs Ranch as well as other 4-H events. The scholarship will pay \$400 towards camp registration fees and will be paid directly to Rock Springs Ranch prior to the 4-Her attending camp. For other events costing less than \$400 the coverage amount will be on a case-by-case basis and for more expensive events depending on fund availability. The scholarship application can be found here: [Phillips County 4-H](#)

PHILLIPS COUNTY FAIR PREMIUM REQUIREMENTS

Required participation to receive a Phillips County Fair premium for 2026:

- 4-H members must attend three 4-H Club meetings from roll call to adjournment
- Work their shifts in the fair food concession stand

Members must also meet **one** of the following requirements:

- Attend 4-H Sunday
- Participate in the county sponsored fundraiser (Subway cards this year)
- Participate in County 4-H Club Day
- Participate in a 4-H leadership activity, such as serving as a teen leader at Day Camp

ROOKS COUNTY 4-H DOG PRACTICES

To be held at 1:00 pm at the Rooks County Fairgrounds, 4-H Building on the following dates—January 18, February 15, March 15, April 19, May 17, and June 21

Please bring proof of dog vaccination records, water, and treats for your dogs. Additional summer practices may be scheduled as needed.

Members and their dogs must attend 2 practices to be eligible to show at the Rooks County Free Fair. The dog project leader is Mari Jo Stout. If you have any questions, please contact her at 785-623-8006.

ROOKS COUNTY 4-H OFFICERS & CLUB LEADERS TRAINING

All club officers and leaders should complete the training videos by February 1. Resources are available here—[Officer Resources](#)

ROOKS COUNTY 4-H FINANCIAL ASSISTANCE FOR EVENTS

Financial Assistance is available for 4-H members that attend conferences and camps as long as the member(s) work a shift in the Rooks County Free Fair 4-H Food Stand. 4-H Council will pay \$150 toward registration fees.



WHAT IS IT?

The Northwest Kansas 4-H Agricultural Ambassador program is a leadership opportunity for teens 13 and older, who are passionate about agriculture and educating others. *Participation in 4-H is not required.*

The program focuses on:

- Connecting youth with their local agricultural industries
- Exploring the richness and diversity of Kansas opportunities
- Developing ag advocacy skills and fostering educational mindsets
- Increasing access to career and post-secondary experiences within the agriscience world

The Northwest Kansas 4-H Agricultural Ambassadors complete training to develop leadership and teamwork skills that are used in promoting and educating communities about agriculture. This includes leading educational experiences for youth and attending ag events, such as the Kansas Youth Ag Experience trip.

HOW DO I BECOME A NORTHWEST KANSAS 4-H AGRICULTURAL AMBASSADOR?

- 4-H Age 13-18 Years Old (Age of January 1 of the Current 4-H Year)
- Meet by ZOOM 4-5 times per year and 3-4 times in-person (i.e. Super Saturday)
- Attend the Ambassador Orientation, Ag Experience Trip and Winter Educational Event
- Complete a 1-year term (March-March)
- Complete application, submit a leadership resume, a cover letter, three letters of reference, and complete a virtual interview if selected as a finalist
- Present the provided annual agricultural lesson in your community (i.e. club meetings, school classrooms, project meetings, local libraries, etc.)

Additionally, ambassadors must complete a minimum of 3 items from the following list: present at least one public presentation, print one agriculture-related newspaper article, broadcast one radio/TV spot, social media agriculture promotional, participate individually in a mock job interview competition, lead/teach a school enrichment program, lead a community service project, head a fundraiser event, construct a window display in a business, other - approved by advisor/extension agent.

Participants must have a current Kansas 4-H Health, Code of Conduct, and Photo Release Form filled out and signed on file at their respective Extension Offices.

For questions regarding the Northwest Kansas 4-H Agricultural Ambassador Program, contact your local Kansas State University Extension office.

KANSAS STATE
UNIVERSITY

Extension



KANSAS STATE
UNIVERSITY

Extension
Phillips Rooks District

SHEEP & GOAT PRODUCTION BASICS

January 24, 2026

9:00 am to noon

NW KS Ag Education Center
602 Ash Avenue
Palco, KS

Topics will include

- ✓ Lambing & Kidding
- ✓ Deworming Dos & Don'ts
- ✓ Determining Parasites by Fecal Counts

Guest Speakers

Dr. Caitlin Beall, DVM
Central Veterinary Services

Dr. Kelsey Bentley
K-State Extension Small Ruminant
Specialist

**Please RSVP by January 20 to 785-425-6851
or rbrooke@ksu.edu**



K-State Research and Extension is committed to providing equal opportunity for participation in all programs, services and activities. Program information may be available in languages other than English. Reasonable accommodations for persons with disabilities, including alternative means for communication (e.g., Braille, large print, audio tape, and American Sign Language) may be requested by contacting the event contact, Rachael Brooke, two weeks prior to the start of the event at 785-425-6851 or rbrooke@ksu.edu. Requests received after this date will be honored when it is feasible to do so. Language access services, such as interpretation or translation of vital information will be provided free of charge to limited English proficient individuals upon request.

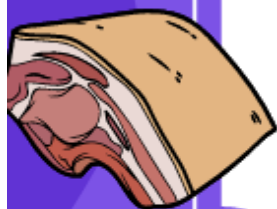
REGISTER
NOW!!



REGISTRATION
LINK BELOW!!

KANSAS STATE UNIVERSITY

YOUTH MEAT JUDGING CONTEST



MARCH 1, 2026

**REGISTRATION ON
JUDGINGCARD.COM- CLICK
SYMBOL OR LINK BELOW!**

**QUESTIONS TO ERIN BEYER
ERBEYER@KSU.EDU**



<https://www.judgingcard.com/Registration/Info.aspx?ID=24341>

- AT LEAST 6 CLASSES, 40 RETAIL ID, AND QUESTIONS
- MEAT LAB AT WEBER HALL
- REGISTRATION OPENS AT 7:00AM
- CONTEST BEGINS AT 8:00AM
- AWARDS FOR TOP 10 AND HIGH TEAM
- YOUTH OF ALL AGES ARE WELCOME



2026 K-STATE JUNIOR BEEF PRODUCER DAY

Program

Join us on March 7, 2026, for the biennial K-State Junior Beef Producer Day! This event is a fun-filled educational day for youth, parents, beef project leaders, ag teachers, and extension agents to expand their knowledge of youth beef projects. Presentations by K-State faculty, staff, K-State livestock judging team members, students, and guest speakers will cover topics that may include selection, nutrition, daily care, meat science, reproduction, health, grooming, and showmanship. An optional YQCA certification class will be offered at the end of the day. A complimentary lunch and t-shirt will also be provided for those who register by the deadline. The registration fee is \$20 per person for those who sign up by February 13. The fee will increase to \$30 per person for those who register after the deadline. Only those who register by February 13 will receive a t-shirt. This is a family event! Anyone attending the event must register, including youth and adults.

Registration

Deadline: February 13

Fee: \$20/person

Registration Link: <https://bit.ly/BeefJrProducer>

Late Registration: \$30/person (after February 13)

*All attendees must register, including youth & adults.

**Late registrants will not receive a t-shirt.



Scan Me!

Tentative Schedule

8:00AM	Check-in
9:00AM	Welcome
9:15AM	Project Selection
10:00AM	Morning Breakout Sessions -Nutrition, Meat Science, Daily Care, Grooming & Fitting
Noon	Lunch
1:00PM	Afternoon Breakout Sessions -Health, Reproduction, Showmanship
3:15PM	Dismissal
3:30PM	Optional YQCA Class

Questions?

Lexie Hayes

☎ 785.532.1264 ✉ adhayes@ksu.edu

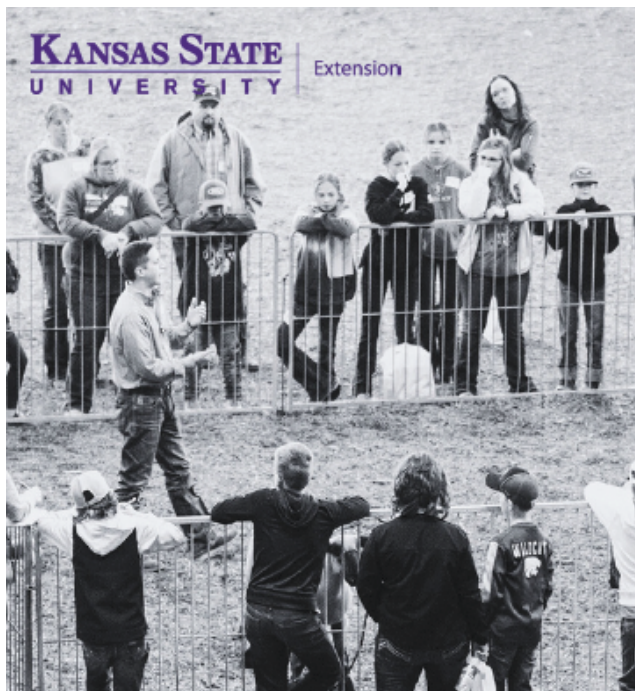
Registration Due
February 13



K-State, County Extension Councils, Extension Districts, and U.S. Department of Agriculture
Cooperating. All educational programs and materials available without discrimination on the basis of
race, color, religion, national origin, sex, age, or disability.

KANSAS STATE
UNIVERSITY

Extension



2026 K-State Junior Sheep Producer Day



Date

4.11.2026

Manhattan, KS



Scan Me!



Registration

Due: 3.20.2026

Cost: \$20/person

<https://bit.ly/SheepJrProducer>

*All adults & youth must register to attend.

**Only those registered by 3/20/26 will receive a t-shirt.

***Late registration is \$30/person.



Questions

Lexie Hayes



785.532.1264



adhayes@ksu.edu

Program

Join us for the biennial K-State Junior Sheep Producer Day on Saturday, April 11, 2026. Presentations will be provided by featured guests, as well as K-State faculty, staff, and students. This event will be an educational day of activities in which youth, parents, extension agents, ag teachers, and sheep project leaders can increase their knowledge of youth sheep project selection and management. A variety of topics will be shared, including an optional YQCA certification at the end of the day. All ages and skill levels are invited! Lunch and a t-shirt are included. The registration fee is \$20/person for those who sign up by March 20 or \$30/person for those who register after that date. Only those who register by the deadline will receive a t-shirt. This is a family event! Anyone attending, including both youth and adults, must register. There will be an optional tour of the sheep and meat goat center offered on Friday evening and Saturday after jr. day.

Tentative Schedule

Friday, April 10

5:00-7:00PM Optional Tour of Sheep & Goat Center

Saturday, April 11

8:00AM Check-in

9:00AM Welcome

9:15AM Selection

10:00AM Nutrition

10:45AM Morning Breakout Sessions

-facilities & equipment, reproduction, project management purchase to show

NOON Lunch

1:00PM Health

1:45PM Afternoon Breakout Sessions

-wool, showmanship, clipping & grooming

3:45PM Dismissal

4:00PM Optional YQCA Class

4:00-6:00PM Optional Sheep & Goat Center Tour



K-State, County Extension Councils, Extension Districts, and U.S. Department of Agriculture Cooperating. All educational programs and materials available without discrimination on the basis of race, color, religion, national origin, sex, age, or disability.



SAVE THE DATE

2026 Livestock County Fair Management Clinic



Kansas State University



Animal Sciences and Industry

April 13 & 16, 2026

7-9pm

Hosted online via Zoom



K-STATE
Research and Extension

The clinic is designed for county fair board members, Extension agents and volunteers involved in local livestock fair management and leadership. This professional development opportunity consists of a forum for open communication for individuals working with livestock at their local fairs. Although some of the topics can be applied generally to the county fair, this program focuses specifically on the livestock perspective. K-State faculty, staff, fair board members, extension agents, and outside speakers will facilitate discussion directly related to livestock activity at local livestock fairs in Kansas. It is a collaborative effort among all of those involved in the livestock project aspects of a county fair. The program has been divided over two evenings, with different topics being covered each night. This year we will be breaking out into round table discussions. The sessions will be recorded.

4-H PLEDGE

I pledge my **HEAD** to clearer thinking,
my **HEART** to greater loyalty,
my **HANDS** to larger service,
and my **HEALTH** to better living,
for my club, my community,
my country, and my world.



4 - H C A L E N D E R O F E V E N T S

January

- 12 Rooks County 4-H Junior Leaders
- 12 Rooks County 4-H Council
- 15 Northwest Kansas 4-H Agricultural Ambassador Program Deadline
- 18 Dog Practice - Stockton
- 23 State 4-H Horse Judging Contest
- 26 Phillips County 4-H Council
- 31-February 1 Dog Judges Training/Recertification and Leader Training

February

- 1 Rooks County 4-H Clubs complete Officer & Club Leader Training Videos
- 15 Dog Practice - Stockton
- 15-16 Citizenship in Action
- 21-22 Horse Panorama

March

- 1 4-H Day with K-State Women's Basketball Team
- 1 K-State Youth Meat Judging Contest
- 7 K-State Junior Beef Producer Day
- 9 YQCA - Stockton
- 13 Blackout 10 Livestock Judging Contest
- 15 Dog Practice - Stockton
- 30 YQCA - Phillipsburg

April

- 11 K-State Junior Sheep Producer Day
- 13 YQCA - Stockton
- 13 Livestock County Fair Management Clinic
- 16 Livestock County Fair Management Clinic
- 19 Dog Practice - Stockton

May

- 17 Dog Practice - Stockton

June

- 13-23 Citizenship Washington Focus
- 21 Dog Practice - Stockton

Visit our website:

<https://www.phillipsooks.k-state.edu/4-h/>

KANSAS STATE
UNIVERSITY

Extension
Phillips Rooks District

K-State Research and Extension is committed to providing equal opportunity for participation in all programs, services and activities. Program information may be available in languages other than English. Reasonable accommodations for persons with disabilities, including alternative means for communication (e.g., Braille, large print, audio tape, and American Sign Language) may be requested by contacting the event contact, Anna Muir, two weeks prior to the start of the event at 785-425-6851 or amuir@ksu.edu. Requests received after this date will be honored when it is feasible to do so. Language access services, such as interpretation or translation of vital information will be provided free of charge to limited English proficient individuals upon request.