



# Beyond Ready

F E B R U A R Y 2 0 2 6  
4 - H N E W S L E T T E R



**KANSAS STATE**  
**UNIVERSITY**

Extension  
Phillips Rooks District

115 N Walnut Street  
Stockton, KS 67669  
785-425-6851

784 Sixth Street  
Phillipsburg, KS 67661  
785-543-6845

Team:  
Anna Muir, Director  
Rachael Brooke, Agent  
Jenny Reichard, Office Professional  
Cody Miller, Agent  
Cindy Walker, Agent  
Kristin Nash, Office Professional

Kansas State University is an equal opportunity employer and provider.

# STATE 4-H NEWS

## COMMUNICATIONS RESOURCES

As you begin to prepare for County 4-H Club Day remember to check out the great resources for project talks, illustrated talks, demonstrations, and public speaking on the 4-H Communications Project Page—[Communications](#) | [Personal Development](#) | [Projects](#) | [Kansas 4-H Youth Development](#)

## CITIZENSHIP WASHINGTON FOCUS TRIP

June 13-23, 2026. Road trip across the USA stopping to see Philadelphia, Gettysburg, the Liberty Bell and more! Visit Capitol Hill, government departments, historic sites, and memorials. Get a close-up view of the political process through visits to Capitol Hill. Meet with the Kansas Congressional and Senate delegations to discuss legislative issues. Participate in workshops and assembly groups to learn life skills and discuss possible solutions to domestic and international problems. Interact with 4-H members from other states, learning and sharing about 4-H and other interests and issues. This trip has filled up quickly in the last few years, make sure that you do not delay in signing up to attend! Register here by February 5—[Personal Information - 2026 Citizenship Washington Focus - Combine trip with Kansas - Oklahoma - Missouri](#)

## INSECT ART CONTEST

The K-State Extension Pesticide Safety and IPM Program is hosting its annual insect-themed art contest, open to all ages and skill levels in Kansas! This year's theme is "Metamorphosis Magic." The goal is to explore insects that undergo complete and incomplete metamorphosis, then create artwork that fits the contest theme. Artwork may include drawings or paintings, digital art, or a 3-D piece such as sculpture, stained glass, or other creative media. Awards will be given for 1st-3rd place in each of the following age categories: Kindergarten - 2nd grade, 3rd grade - 5th grade, 6th grade - 8th grade, High school, and Adult. Entries must be received or postmarked before April 15, 2026. Full contest rules and details are available at: [Learning and Resources](#)

## ROCK SPRINGS RANCH

Summer camp is right around the corner. Be sure to check out the opportunities available at Rock Springs Ranch. They offer the traditional summer camp, a mini camp, and specialty camps like Ranch Camp, Shooting Sports Camp, Outdoor Wilderness Leadership Skills, and Family Camp. Financial assistance is available for 4-H members that want to attend camp. Find out more information about Rock Springs Ranch and get registered - [Rock Springs Ranch](#)

4-H PLEDGE

I pledge my **HEAD** to clearer thinking,  
my **HEART** to greater loyalty,  
my **HANDS** to larger service,  
and my **HEALTH** to better living,  
for my club, my community,  
my country, and my world.



# LOCAL 4 - H NEWS

## UPCOMING MEETINGS

Phillips County 4-H Council — February 23 at 7:00 pm at the Phillips County Annex

Rooks County 4-H Junior Leaders—March 9 at 7:00 pm at the Rooks County Fairgrounds, 4-H Building

Rooks County 4-H Council—March 9 at 7:30 pm at the Rooks County Fairgrounds, 4-H Building

## YOUTH FOR THE QUALITY CARE OF ANIMALS (YQCA)

Required for youth planning to sell livestock in the Rooks County Free Fair 4-H/FFA Livestock Sale, livestock exhibitors at the Kansas State Fair and Kansas Junior Livestock Show. Trainings will be available on March 9 at 6:00 p.m. at the Rooks County Fairgrounds, 4-H Building, March 30 at 5:30 pm. at the Phillips County Annex Meeting Room, and April 13 at 5:30 pm at the Rooks County Fairgrounds, 4-H Building. All livestock must be tagged and turned into the Phillips-Rooks Extension District by May 1 to be eligible for the Phillips County Fair and Rooks County Free Fair.

## COUNTY 4-H CLUB DAY

Youth can participate in Project Talks, Public Speaking, Extemporaneous Speaking, Demonstrations, Illustrated Talks, Model Meetings, Vocal Ensemble, Vocal Chorus, Instrumental Ensemble, Band/Orchestra, Vocal Solo, Instrumental Solo, Dance, Square Dance, Other Dance, Reading, Skit/Creative Dramatics, and Other Talent. Those selected as top blue at County 4-H Club Day will advance to Regional 4-H Club Day.

Guidelines can be found here: [Phillips County 4-H](#) and [rookscounty4-h](#)

**Phillips County**—March 23 at 5:00 pm at Phillipsburg Middle School, please register by March 6 at noon.

**Rooks County**—March 2 at 5:00 pm at the NW Ag Education Center in Palco, please register by calling the Phillips-Rooks District Extension Office by February 20.

**Regional Club Day**—March 27 at 5:00 pm at Trego County School in WaKeeney, registration deadline is March 25 at noon.



## COAT EXCHANGE

Coats and winter weather apparel are needed.

Phillips County—Phillips County Annex Meeting Room

Rooks County—Rooks County Courthouse First Floor North Hallway



## LOCAL 4 - H NEWS

### PHILLIPS COUNTY 4-H GUN SHOW FOOD STAND

Phillips County Fair Building. Club work schedules are as follows (each club needs four 4-Hers and three adults to work):

Saturday, February 14

7:00 am—11:00 am Deer Creek

11:00 am—2:30 pm Lone Prairie

2:30 pm—close Agra Trailblazers

Sunday, February 15

8:30 am—12:30 pm Iowa Union

12:30 pm—close Sunnyside

### PHILLIPS COUNTY 4-H EVENT SCHOLARSHIPS

The Phillips County 4-H Council will provide scholarships to members attending events. \$200 for state events and \$300 for national events. The application does require a Club Leader signature. The scholarship application can be found here: [Phillips County 4-H](#)

### PHILLIPS COUNTY 4-H EVENT SCHOLARSHIP JAKE & LUCILLE JONES

Through the Phillips County Community Foundation a 4-H event scholarship is available to 4-Hers that are wanting to attend Rock Springs Ranch as well as other 4-H events. The scholarship will pay \$400 towards camp registration fees and will be paid directly to Rock Springs Ranch prior to the 4-Her attending camp. For other events costing less than \$400 the coverage amount will be on a case-by-case basis and for more expensive events depending on fund availability. The scholarship application can be found here: [Phillips County 4-H](#)

### PHILLIPS COUNTY FAIR PREMIUM REQUIREMENTS

Required participation to receive a Phillips County Fair premium for 2026:

- 4-H members must attend three 4-H Club meetings from roll call to adjournment
- Work their shifts in the fair food concession stand

Members must also meet **one** of the following requirements:

- Attend 4-H Sunday
- Participate in the county sponsored fundraiser (Subway cards this year)
- Participate in County 4-H Club Day
- Participate in a 4-H leadership activity, such as serving as a teen leader at Day Camp

## LOCAL 4 - H NEWS

### ROOKS COUNTY 4-H OFFICERS & CLUB LEADERS TRAINING

All club officers and leaders should complete the training videos by February 1. Resources are available here—[Officer Resources](#)

### ROOKS COUNTY 4-H DOG PRACTICES

To be held at 1:00 pm at the Rooks County Fairgrounds, 4-H Building on the following dates—February 15, March 15, April 19, May 17, and June 21

Please bring proof of dog vaccination records, water, and treats for your dogs. Additional summer practices may be scheduled as needed.

Members and their dogs must attend 2 practices to be eligible to show at the Rooks County Free Fair. The dog project leader is Mari Jo Stout. If you have any questions, please contact her at 785-623-8006.

### ROOKS COUNTY 4-H FINANCIAL ASSISTANCE FOR EVENTS

Financial Assistance is available for 4-H members that attend conferences and camps as long as the member(s) work a shift in the Rooks County Free Fair 4-H Food Stand. 4-H Council will pay \$150 toward registration fees.

### ROOKS COUNTY 4-H LIVESTOCK TAGGING

**Beef** will be tagged on March 28 beginning at 9:00 am at Central Veterinary Services east of Stockton. All market beef must be tagged with a 4-H tag; breeding heifers and bucket calves can be tagged with your herd tags; however, you need to report that tag information to the Phillips-Rooks Extension District Office at 785-425-6851 by May 1. You may also bring your hogs, goats, and sheep if you already have them.

**Hogs, Goats, and Sheep** will be tagged on April 29 beginning at 8:30 am at the Rooks County Fairgrounds. Please schedule an appointment with the Phillips-Rooks Extension District Office at 785-425-6851. All hogs, goats, and sheep must be tagged with a 4-H tag.

### ROOKS COUNTY FREE FAIR CHANGES

The Rooks County Free Fair will be held August 4-8. All static projects (projects housed in the 4-H Building) will be judged on Monday, August 3. The livestock check in/weigh in, animal show schedule and livestock sale will not change from previous years. For registered beef animals, eID tags will be allowed in place of a tattoo as long as the eID is listed on the registration papers. All Rooks County Free Fair 4-H/FFA livestock species shows will be blow and go. Any product used must be water soluble, nothing stiff and/or sticky. Show order for the sheep and goat show will be dairy goats, sheep, and meat goats. Following the livestock sale on Friday evening 4-H members are responsible for their animals until release on Sunday morning.



**KANSAS STATE**  
**UNIVERSITY**

Extension  
Phillips Rooks District

# SHEEP & GOAT PRODUCTION BASICS

February 14, 2026

9:00 am to noon

NW KS Ag Education Center  
602 Ash Avenue  
Palco, KS

Topics will include

- ✓ Lambing & Kidding
- ✓ Deworming Dos & Don'ts
- ✓ Determining Parasites by Fecal Counts

Guest Speakers

Dr. Caitlin Beall, DVM  
Central Veterinary Services

Dr. Kelsey Bentley  
K-State Extension Small Ruminant  
Specialist

**Please RSVP by February 10 to 785-425-6851  
or [rbrooke@ksu.edu](mailto:rbrooke@ksu.edu)**



K-State Research and Extension is committed to providing equal opportunity for participation in all programs, services and activities. Program information may be available in languages other than English. Reasonable accommodations for persons with disabilities, including alternative means for communication (e.g., Braille, large print, audio tape, and American Sign Language) may be requested by contacting the event contact, Rachael Brooke, two weeks prior to the start of the event at 785-425-6851 or [rbrooke@ksu.edu](mailto:rbrooke@ksu.edu). Requests received after this date will be honored when it is feasible to do so. Language access services, such as interpretation or translation of vital information will be provided free of charge to limited English proficient individuals upon request.

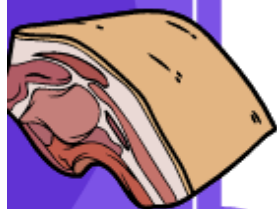
REGISTER  
NOW!!



REGISTRATION  
LINK BELOW!!

# KANSAS STATE UNIVERSITY

## YOUTH MEAT JUDGING CONTEST



**MARCH 1, 2026**

**REGISTRATION ON  
JUDGINGCARD.COM- CLICK  
SYMBOL OR LINK BELOW!**

**QUESTIONS TO ERIN BEYER  
ERBEYER@KSU.EDU**



<https://www.judgingcard.com/Registration/Info.aspx?ID=24341>

- AT LEAST 6 CLASSES, 40 RETAIL ID, AND QUESTIONS
- MEAT LAB AT WEBER HALL
- REGISTRATION OPENS AT 7:00AM
- CONTEST BEGINS AT 8:00AM
- AWARDS FOR TOP 10 AND HIGH TEAM
- YOUTH OF ALL AGES ARE WELCOME







# Kansas 4-H Day *with* K-State Women's Basketball



**K-State Wildcats Vs.  
Iowa State**  
WILL BE TELEVISED



## Step 1: Pick a Package:

\$28 Package Includes:

- Ticket
- \$10 Concession Voucher
- T-Shirt

\$18 Package Includes:

- Ticket
- \$10 Concession Voucher

## Step 2: Register to get Tickets:

Use the QR Code or the link to register



<https://tinyurl.com/5x84fp33>



Pick up ticket packages on  
game day 10:00 am – 12:30 pm  
Location TBA closer to event.



Doors open for the general  
public at 12:00 pm



Tip-off at 1:00 pm

**Online registration  
for this event will  
be due February 8,  
2026. No paper  
registrations will  
be accepted.**

K-State Research and Extension is an equal opportunity provider and employer. Issued in furtherance of Cooperative Extension Work, Acts of May 8 and June 30, 1914, in cooperation with the U.S. Department of Agriculture, Director of K-State Research and Extension, Kansas State University, County Extension Councils, Extension Districts. Resource:  
<https://www.apa.org/topics/resilience>

**Sunday, March 1, @ 1:00 PM**



# 2026 K-STATE JUNIOR BEEF PRODUCER DAY

## Program

Join us on March 7, 2026, for the biennial K-State Junior Beef Producer Day! This event is a fun-filled educational day for youth, parents, beef project leaders, ag teachers, and extension agents to expand their knowledge of youth beef projects. Presentations by K-State faculty, staff, K-State livestock judging team members, students, and guest speakers will cover topics that may include selection, nutrition, daily care, meat science, reproduction, health, grooming, and showmanship. An optional YQCA certification class will be offered at the end of the day. A complimentary lunch and t-shirt will also be provided for those who register by the deadline. The registration fee is \$20 per person for those who sign up by February 13. The fee will increase to \$30 per person for those who register after the deadline. Only those who register by February 13 will receive a t-shirt. This is a family event! Anyone attending the event must register, including youth and adults.

## Registration

Deadline: February 13

Fee: \$20/person

Registration Link: <https://bit.ly/BeefJrProducer>

Late Registration: \$30/person (after February 13)

\*All attendees must register, including youth & adults.

\*\*Late registrants will not receive a t-shirt.



Scan Me!

## Tentative Schedule

8:00AM	Check-in
9:00AM	Welcome
9:15AM	Project Selection
10:00AM	Morning Breakout Sessions -Nutrition, Meat Science, Daily Care, Grooming & Fitting
Noon	Lunch
1:00PM	Afternoon Breakout Sessions -Health, Reproduction, Showmanship
3:15PM	Dismissal
3:30PM	Optional YQCA Class

## Questions?

**Lexie Hayes**

☎ 785.532.1264 ✉ [adhayes@ksu.edu](mailto:adhayes@ksu.edu)

*Registration Due*  
**February 13**



K-State, County Extension Councils, Extension Districts, and U.S. Department of Agriculture  
Cooperating. All educational programs and materials available without discrimination on the basis of  
race, color, religion, national origin, sex, age, or disability.

**KANSAS STATE**  
UNIVERSITY

Extension





**KANSAS STATE  
UNIVERSITY**

Extension  
Phillips Rooks District



Join the Rooks County 4-H Junior Leaders

# SMALL ANIMAL SHOWMANSHIP CLINIC

MARCH 15 AT NOON  
ROOKS COUNTY FAIRGROUNDS, 4-H BUILDING  
STOCKTON, KS

## LEARN HOW TO SHOW:

- ✓ Cats
- ✓ Dogs
- ✓ Poultry
- ✓ Rabbits

Please RSVP by March 11  
Call the Phillips-Rooks  
Extension District  
785-425-6851



K-State Research and Extension is committed to providing equal opportunity for participation in all programs, services and activities. Program information may be available in languages other than English. Reasonable accommodations for persons with disabilities, including alternative means for communication (e.g., Braille, large print, audio tape, and American Sign Language) may be requested by contacting the event contact, Rachael Brooke, two weeks prior to the start of the event at 785-425-6851 or [rbrooke@ksu.edu](mailto:rbrooke@ksu.edu). Requests received after this date will be honored when it is feasible to do so. Language access services, such as interpretation or translation of vital information will be provided free of charge to limited English proficient individuals upon request.



# GOING TO GRASS PREPARATION

**M A R C H 19**

**9:30 AM TO NOON**

**NW KS Ag Education Center  
602 Ash Avenue  
Palco**

**Free  
Program!**

## PROGRAM TOPICS & PRESENTERS

### **Preparing the Cattle Herd to Go to Grass**

- **Emma Briggs, K-State Beef Systems Extension Specialist**

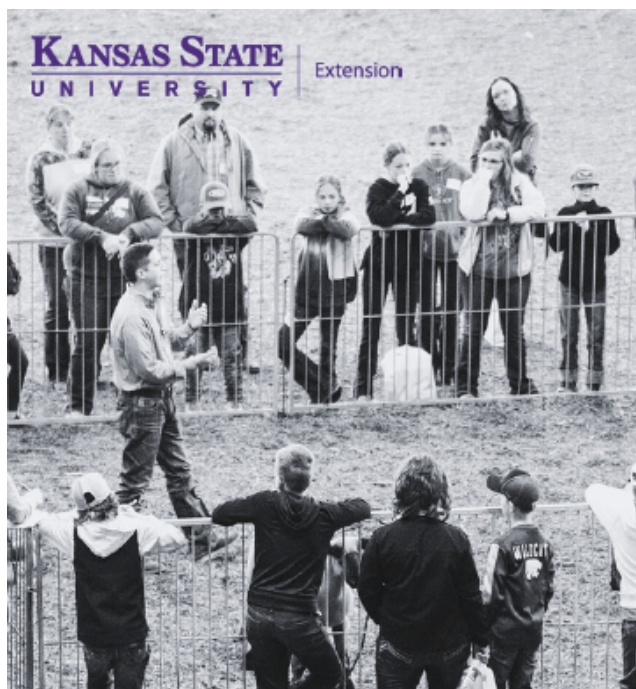
### **Fly and Tick Control & New World Screwworm**

- **Cassandra Olds, K-State Entomologist**



Please RSVP by March 17 to Phillips-Rooks Extension District  
785-425-6851 or [rbrooke@ksu.edu](mailto:rbrooke@ksu.edu)

K-State Research and Extension is committed to providing equal opportunity for participation in all programs, services and activities. Program information may be available in languages other than English. Reasonable accommodations for persons with disabilities, including alternative means for communication (e.g., Braille, large print, audio tape, and American Sign Language) may be requested by contacting the event contact, Rachael Brooke, two weeks prior to the start of the event at 785-425-6851 or [rbrooke@ksu.edu](mailto:rbrooke@ksu.edu). Requests received after this date will be honored when it is feasible to do so. Language access services, such as interpretation or translation of vital information will be provided free of charge to limited English proficient individuals upon request.



# 2026 K-State Junior Sheep Producer Day



*Date*

**4.11.2026**

**Manhattan, KS**



Scan Me!



*Registration*

**Due: 3.20.2026**

**Cost: \$20/person**

**<https://bit.ly/SheepJrProducer>**

*\*All adults & youth must register to attend.*

*\*\*Only those registered by 3/20/26 will receive a t-shirt.*

*\*\*\*Late registration is \$30/person.*



*Questions*

**Lexie Hayes**



**785.532.1264**



**adhayes@ksu.edu**

## *Program*

Join us for the biennial K-State Junior Sheep Producer Day on Saturday, April 11, 2026. Presentations will be provided by featured guests, as well as K-State faculty, staff, and students. This event will be an educational day of activities in which youth, parents, extension agents, ag teachers, and sheep project leaders can increase their knowledge of youth sheep project selection and management. A variety of topics will be shared, including an optional YQCA certification at the end of the day. All ages and skill levels are invited! Lunch and a t-shirt are included. The registration fee is \$20/person for those who sign up by March 20 or \$30/person for those who register after that date. Only those who register by the deadline will receive a t-shirt. This is a family event! Anyone attending, including both youth and adults, must register. There will be an optional tour of the sheep and meat goat center offered on Friday evening and Saturday after jr. day.

## *Tentative Schedule*

### **Friday, April 10**

**5:00-7:00PM** Optional Tour of Sheep & Goat Center

### **Saturday, April 11**

**8:00AM** Check-in

**9:00AM** Welcome

**9:15AM** Selection

**10:00AM** Nutrition

**10:45AM** Morning Breakout Sessions

-facilities & equipment, reproduction, project management purchase to show

**NOON** Lunch

**1:00PM** Health

**1:45PM** Afternoon Breakout Sessions

-wool, showmanship, clipping & grooming

**3:45PM** Dismissal

**4:00PM** Optional YQCA Class

**4:00-6:00PM** Optional Sheep & Goat Center Tour



K-State, County Extension Councils, Extension Districts, and U.S. Department of Agriculture Cooperating. All educational programs and materials available without discrimination on the basis of race, color, religion, national origin, sex, age, or disability.





# SAVE THE DATE

## 2026 Livestock County Fair Management Clinic



Kansas State University



Animal Sciences and Industry

April 13 & 16, 2026

7-9pm

Hosted online via Zoom



**K-STATE**  
Research and Extension

The clinic is designed for county fair board members, Extension agents and volunteers involved in local livestock fair management and leadership. This professional development opportunity consists of a forum for open communication for individuals working with livestock at their local fairs. Although some of the topics can be applied generally to the county fair, this program focuses specifically on the livestock perspective. K-State faculty, staff, fair board members, extension agents, and outside speakers will facilitate discussion directly related to livestock activity at local livestock fairs in Kansas. It is a collaborative effort among all of those involved in the livestock project aspects of a county fair. The program has been divided over two evenings, with different topics being covered each night. This year we will be breaking out into round table discussions. The sessions will be recorded.

*“To Make the Best Better”*





# VEHICLE MAINTENANCE

**Join the Rooks County 4-H Junior Leaders**

April 25 at 2:00 pm  
EGA Service Center  
211 Hendrick St. Stockton, KS

## ***Learn:***

- ☒ General Vehicle Maintenance
  - ☒ Changing the Oil
  - ☒ Changing a Tire
  - ☒ Jumpstarting a Vehicle
- And Much More!**



***Please RSVP by April 22.***

Call the Phillips-Rooks Extension  
District at 785-425-6851.



K-State Research and Extension is committed to providing equal opportunity for participation in all programs, services and activities. Program information may be available in languages other than English. Reasonable accommodations for persons with disabilities, including alternative means for communication (e.g., Braille, large print, audio tape, and American Sign Language) may be requested by contacting the event contact, Rachael Brooke, two weeks prior to the start of the event at 785-425-6851 or [rbrooke@ksu.edu](mailto:rbrooke@ksu.edu). Requests received after this date will be honored when it is feasible to do so. Language access services, such as interpretation or translation of vital information will be provided free of charge to limited English proficient individuals upon request.

# LARGE ANIMAL SHOWMANSHIP CLINIC



**Join the Rooks County 4-H Junior Leaders**

May 28 at 5:30 pm

Rooks County Fairgrounds, Sutor-Blauer Arena

Stockton, KS

## LEARN HOW TO SHOW:

- |              |             |         |
|--------------|-------------|---------|
| ✓ Beef       | ✓ Horse     | ✓ Sheep |
| ✓ Dairy Goat | ✓ Meat Goat | ✓ Swine |

**RSVP BY  
MAY 25**

**Call the Phillips-Rooks  
Extension District  
785-425-6851**

K-State Research and Extension is committed to providing equal opportunity for participation in all programs, services and activities. Program information may be available in languages other than English. Reasonable accommodations for persons with disabilities, including alternative means for communication (e.g., Braille, large print, audio tape, and American Sign Language) may be requested by contacting the event contact, Rachael Brooke, two weeks prior to the start of the event at 785-425-6851 or [rbrooke@ksu.edu](mailto:rbrooke@ksu.edu). Requests received after this date will be honored when it is feasible to do so. Language access services, such as interpretation or translation of vital information will be provided free of charge to limited English proficient individuals upon request.



## 4 - H C A L E N D E R O F E V E N T S

### February

1 Rooks County 4-H Clubs complete Officer & Club Leader Training Videos  
14-15 Phillips County 4-H Gun Show Concession Stand  
15 Dog Practice - Stockton  
15-16 Citizenship in Action  
20 Rooks County 4-H Club Day Entry Deadline  
21-22 Horse Panorama  
23 Phillips County 4-H Council

### March

1 4-H Day with K-State Women's Basketball Team  
1 K-State Youth Meat Judging Contest  
2 Rooks County 4-H Club Day  
6 Phillips County 4-H Club Day Entry Deadline  
7 K-State Junior Beef Producer Day  
9 YQCA - Stockton  
9 Rooks County 4-H Junior Leaders  
9 Rooks County 4-H Council  
13 Blackout 10 Livestock Judging Contest  
15 Small Animal Showmanship Clinic  
15 Dog Practice - Stockton  
23 Phillips County 4-H Club Day  
25 Regional 4-H Club Day Entry Deadline  
27 Regional 4-H Club Day  
28 Rooks County 4-H/FFA Beef Tagging  
30 YQCA - Phillipsburg

### April

11 K-State Junior Sheep Producer Day  
13 YQCA - Stockton  
13 Livestock County Fair Management Clinic  
16 Livestock County Fair Management Clinic  
19 Dog Practice - Stockton  
25 Vehicle Maintenance  
27 Phillips County 4-H Council Committees  
27 Phillips County 4-H Council  
29 Rooks County 4-H/FFA Small Animal Tagging

### May

1 Livestock Tagging Deadline  
1 Horse Identification Certificates Due  
1 Last Day to Add/Drop Projects  
11 Rooks County 4-H Junior Leaders  
11 Rooks County 4-H Council  
17 Dog Practice - Stockton  
28 Large Animal Showmanship Clinic

**Visit our website:**

**<https://www.phillipsooks.k-state.edu/4-h/>**

**KANSAS STATE**  
**UNIVERSITY**

Extension  
Phillips Rooks District

K-State Research and Extension is committed to providing equal opportunity for participation in all programs, services and activities. Program information may be available in languages other than English. Reasonable accommodations for persons with disabilities, including alternative means for communication (e.g., Braille, large print, audio tape, and American Sign Language) may be requested by contacting the event contact, Anna Muir, two weeks prior to the start of the event at 785-425-6851 or [amuir@ksu.edu](mailto:amuir@ksu.edu). Requests received after this date will be honored when it is feasible to do so. Language access services, such as interpretation or translation of vital information will be provided free of charge to limited English proficient individuals upon request.